



STEERING THE WORLD

PRODUCT CATALOG

ABOUT US



CATALOG



IMMI VIP

151 S. Ram Road
Antioch, IL 60002
847.395.7250

imminet.com/wheels
immiwheels@imminet.com



Steering The World | imminet.com/wheels | Copyright 2024 IMMI VIP. All Rights Reserved | 7277P Rev 04



STEERING THE WORLD

imminet.com/wheels

- Since 1969, IMMI VIP has designed, manufactured, and marketed steering wheels, controls, and interior products for every commercial vehicle market on the road today
- Focused 100% on the unique demands of commercial vehicles
- Production facilities ready to serve customers ranging from low-volume custom manufacturers to high-volume OEM serial production
- Proudly Made in USA, serving customers around the world
- IATF 16949 Certified
- Wide range of off-the-shelf steering wheel models available to fit almost any vehicle on the planet
- Full engineering services available to design, test, and produce custom and bespoke steering wheels and controls

Visit imminet.com/wheels or email immiwheels@imminet.com for more information

Vehicle Improvement Products is now IMMI VIP

VIP + IMMI = OVER 100 YEARS OF INNOVATION, SAFETY, AND QUALITY

Established in 1961, IMMI is the global leader in commercial vehicle safety systems. A world-class manufacturer of seat belts, air bags, and complete seating systems for commercial vehicles, IMMI also offers a full range of static and dynamic testing capabilities at the Center for Advanced Product Evaluation (CAPE) in Westfield, IN.

Visit IMMI at imminet.com and CAPE at capetesting.com

VIP + IMMI = BRINGING SAFETY TO PEOPLE MORE THAN EVER BEFORE!



WHAT STEERS YOUR WORLD?

MARKETS SERVED



COMMERCIAL
TRUCK



FIRE
& RESCUE



MOTORCOACH
& RV



SCHOOL BUS &
TRANSIT BUS



CONSTRUCTION
& AGRICULTURE



OFF-HIGHWAY
& SPECIALTY



DEFENSE



POWER SPORTS



UNCOMPROMISING QUALITY

STEERING WHEEL CONSTRUCTION



STANDARD WHEEL DESIGNS

Horn Button Or Center Cap

Available with or without horn functionality

Top Cap

Emblem (35mm)

Custom logos available

Base Steering Wheel

Formed/welded armature
Molded or wood grip

Optional Hub Spacer

Lifts wheel additional 1" off steering column

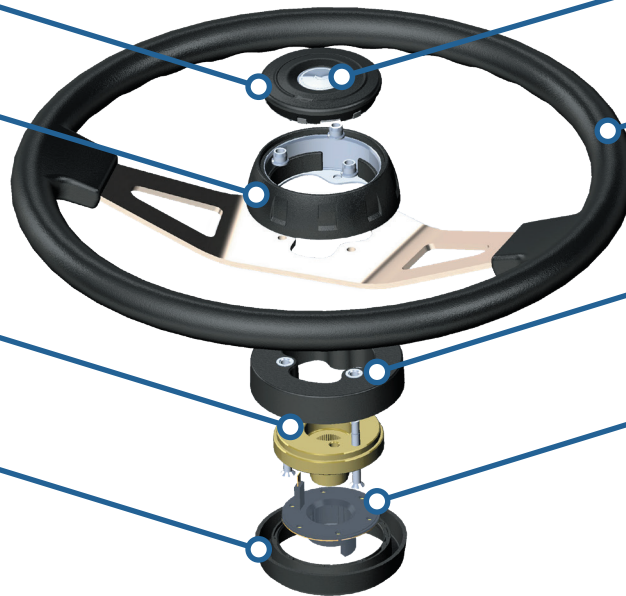
Horn Contact Plate

Hub & Hub Attachments

Hubs available to fit any vehicle on the planet

Optional Column Shroud

Standard & custom designs available to cover steering column gap



ADVANCED WHEEL DESIGNS

Horn Pad

Available with Integrated IMMI 4Front Airbag

Emblem (35mm or 46mm)

Custom logos available

Base Steering Wheel

Formed/welded armature
Molded grip

Optional Control Pods

Numerous standard and custom configurations available

Airbag Mounting System

Integrated Hub

Hubs available to fit any vehicle on the planet



GET A GRIP

STANDARD WHEEL OPTIONS



STANDARD MOLDED

FLEXIBLE VINYL (MOLDED PVC)

Feel
Extra Firm
Cushion

Durability
Extreme

Texture
Molded-In Texture

Other
High Density
High UV
Resistance



POLYURETHANE MOLDED FOAM

Feel
Standard Firm
Cushion

Durability
Very High

Texture
Molded-In Texture

Other
Moderate Density,
Self-Skinning
Foam



PREMIUM LEATHER

FULL LEATHER WRAP

Feel
Premium
Firm Cushion

Durability
High

Texture
Luxury Soft Full
Grain Leather

Options
Multiple Leather
Colors & Custom
Stitching
Available



CUSTOM PATTERN & LEATHER WRAP

Feel
Ultra
Premium

Durability
High

Texture
Luxury Soft
Leather &
Simulated
Woodgrain Finish

Options
Multiple
Woodgrains &
Leather Colors
Available



WOOD & CUSTOM

GENUINE POLISHED WOOD

Feel
Premium
Hardwood

Durability
High

Texture
Smooth Wood
with Finger Grips

Options
High Gloss
Mahogany



CUSTOM GRAPHICS & LEATHER WRAP

Feel
Premium &
Custom

Durability
High

Texture
Luxury Soft
Leather & Custom
Graphic Finish

Options
Multiple
Leather Colors
& Unlimited
Graphics
Available



CONTROL AT EVERY TURN

ADVANCED WHEEL OPTIONS



POLYURETHANE MOLDED FOAM

Feel
Standard Firm
Cushion

Durability
Very High

Texture
Molded-In
Texture

Other
Moderate
Density,
Self-Skinning
Foam



FULL LEATHER WRAP

Feel
Premium
Firm Cushion

Durability
High

Texture
Luxury Soft
Full Grain
Leather

Options
Multiple
Leather Colors
& Custom
Stitching
Available



CUSTOM PATTERN & LEATHER WRAP

Feel
Ultra
Premium

Durability
High

Texture
Luxury Leather
Simulated
Woodgrain
Simulated Carbon
Fiber

Options
Unlimited Custom
Patterns Available



MATTE BLACKWOOD

Modern, no-gloss medium-dark gray wood with visible graining | HY5



STANDARD BURLWOOD

Classic, medium-brown non-linear woodgrain with a slight wine-colored tint | HY1



OREGON BURL

Warm brown-tone burled woodgrain | HY2



CHARCOAL CHERRY

Premium, high gloss dark gray wood with visible graining | HY8



REGAL CHERRY

Similar to standard burl, but slight orange tint | HY7



ZEBRANO

Premium burgundy-brown woodgrain with dark, striking striped grain | HY6



GLOSS BLACK

Sleek, high gloss solid painted finish with no visible graining | HYB



AIRBAG INTEGRATION

V4 and V4S Wheels are available for integration with IMMI frontal airbags
Crash testing and deployment validation program required

VEHICLE INTERFACE OPTIONS

CAN (J1939)

SM300 Series Controllers

LIN

Direct from wheel

RELAY OUTPUT

SM200 Series Controllers

ANALOG

Direct from wheel
(Non-Paddle Controls)



ULTIMATE CONTROL

CONTROL POD OPTIONS



The following are laser etched Control Pod graphic examples.
Custom graphic options are available.

EXTERIOR LIGHTS

	HIGH BEAM FLASH
	MARKER LAMP FLASH
	FOG LIGHTS
	HIGH BEAMS ON
	HIGH BEAMS OFF

PHONE/NAV/INTERIOR

	NAVIGATION UP/DOWN		OK
	HOME		BACK
	PHONE ANSWER/END		
	FRONT/REAR INTERIOR LIGHTS		
	SHADE UP/DOWN		

V4S available with up to 4 two-way paddles for added control

- Volume up/down or audio seek
- Wheel tilt/telescope control
- Pedal in/out adjustment
- CUSTOM OPTIONS AVAILABLE

WARNING CONTROL

	SIREN		MASTER WARNING LIGHTS
	Q-SIREN ACTIVATION		Q-SIREN BRAKE
	E-SIREN ACTIVATION		SIREN SPEAKER UP/DOWN
	SIREN OR AIR HORN		MIC/RADIO CONTROL
	SCENE LIGHTING		

WINDSHIELD

	WINDSHIELD WASH
	INTERMITTENT WIPERS
	WIPERS HI/LO
	WIPERS ON/OFF
	WIPERS OFF

CRUISE CONTROL

	CRUISE ON		CRUISE ACCEL/DECEL
	CRUISE ON/OFF		CRUISE RESUME
	CRUISE SET		CRUISE CANCEL
	CRUISE SET & ACCEL/DECEL		CRUISE OFF
	CRUISE SET/RESUME & ACCEL/DECEL		

ENGINE CONTROL

	AUX BRAKE ACTIVATION
	AUX BRAKE LEVELS 1,2,3
	AUX BRAKE LEVELS 1,2
	TRANSMISSION SHIFT UP/DOWN
	AUX BRAKE OFF

ULTIMATE CONTROL

CONTROL POD OPTIONS



LEFT SIDE

CRUISE



EMERGENCY



WIPERS



WINDOW & SHIFT



PHONE



RIGHT SIDE

ENGINE BRAKE



EMERGENCY



WIPERS



WINDOW & SHIFT



PHONE/DASHBOARD



MISCELLANEOUS



Laser etched left side Control Group pod (V4115L)
Custom graphic options are available.



ULTIMATE CONTROL

CONTROL POD OPTIONS



CENTER



V303-01



V303-02



V303-03



V303-04



V303-05



V303-06



V303-07



Choose from a standard configuration or customize.
Icons may vary slightly in appearance.

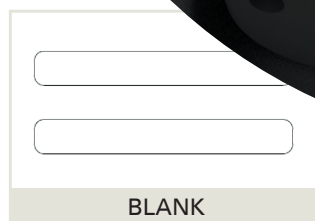
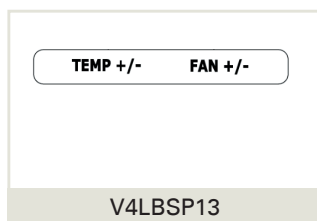
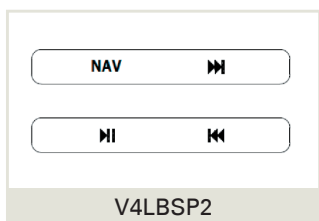
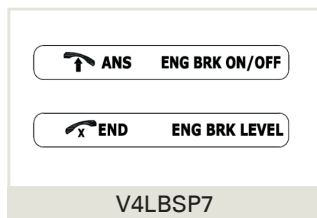
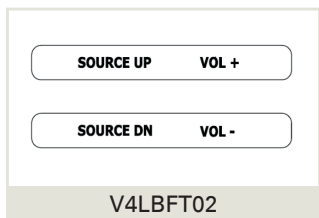


Cutaway view of control pod labeling from the side



ULTIMATE CONTROL

CONTROL POD SIDE LABEL OPTIONS

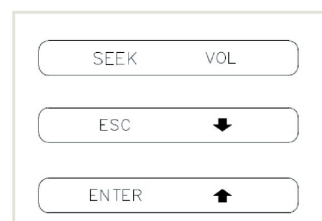
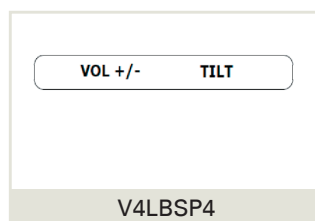
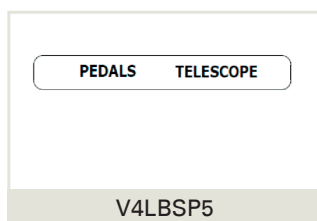
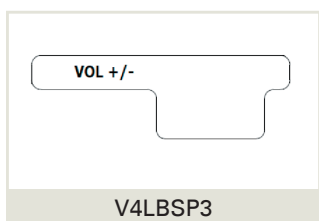
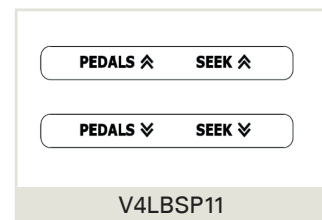
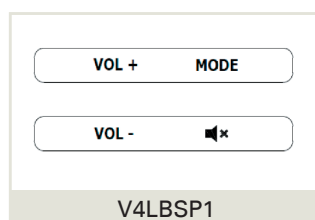
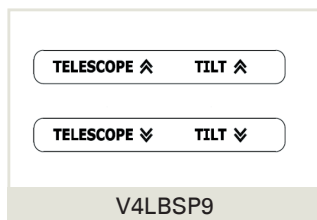
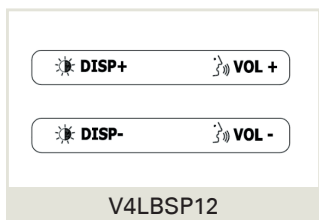
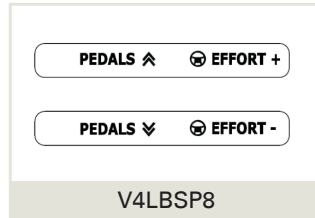
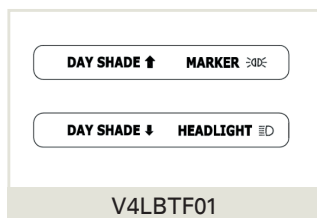
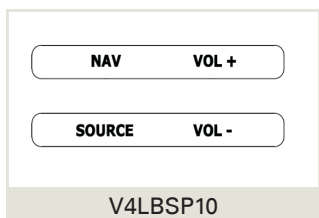


ADDED CONTROL

V4S and Vision Series available with up to 4 two-way paddles for added control.

Shown above: V4LBSP1

Custom graphic options are available.





ADVANCED WHEEL DESIGNS

VISION SERIES



Flat-bottom design, allows easy ingress and egress

Shown above: polyurethane molded foam grip,
SmartWheel controls: 10 function buttons + 4 two-way paddles (18 total functions)

DIAMETER	HORIZONTAL 16.7" 424mm	VERTICAL 15.9" 404mm
DEPTH W/O HUB	3.36" 92.2mm	
GRIP OPTIONS	<ul style="list-style-type: none">• Polyurethane Molded Foam• Leather Wrap	
EMBLEM OPTIONS	<ul style="list-style-type: none">• Integrated Horn Pad• Emblem: VIP Logo, Custom Logo, Horn Trumpet, or Blank• Emblem Sizes: Round 46mm	
APPLICATION OPTIONS	<ul style="list-style-type: none">• Available with black or chrome control pod trim ring• IMMI 4Front Driver Airbag-Ready• Standard or Custom Control Pods	
PRIMARY MARKETS	<ul style="list-style-type: none">■ COMMERCIAL TRUCK■ DELIVERY VAN■ SCHOOL & TRANSIT BUS■ FIRE & RESCUE■ DEFENSE	

KEY FEATURES

- Base model available without control pods
- Unique flat-bottom profile for easy ingress and egress
- Comfort grip bumps at 10 and 2 o'clock
- Heated grip options available
- Custom leather options available (colors or textures)
- **ADAS** Vision Technology-Ready



ADVANCED WHEEL DESIGNS

VISION SERIES

ADAS-READY TECHNOLOGY

Haptic feedback, built into the grip, can be programmed for alerts in sync with or independent of the LED lights

LED displays are individually programmable and able to display any color



Flat-bottom design, allows easy ingress and egress

Shown above: polyurethane molded foam grip,
SmartWheel controls: 10 function buttons + 4 two-way paddles (18 total functions)
LED display and haptic feedback integration

DIAMETER	HORIZONTAL	VERTICAL
	16.7" 424mm	15.9" 404mm
DEPTH W/O HUB	3.36" 92.2mm	
GRIP OPTIONS	<ul style="list-style-type: none">• Polyurethane Molded Foam• Leather Wrap	
EMBLEM OPTIONS	<ul style="list-style-type: none">• Integrated Horn Pad• Emblem: VIP Logo, Custom Logo, Horn Trumpet, or Blank• Emblem Sizes: Round 46mm	
APPLICATION OPTIONS	<ul style="list-style-type: none">• Available with black or chrome control pod trim ring• IMMI 4Front Driver Airbag-Ready• Standard or Custom Control Pods	
PRIMARY MARKETS	<ul style="list-style-type: none">COMMERCIAL TRUCKDELIVERY VANSCHOOL & TRANSIT BUSFIRE & RESCUEDEFENSE	

KEY FEATURES

Vision Technology is a suite of ADAS features available on any custom steering wheel design or off-the-shelf in the Vision Series

Base model No LEDs or haptics

Fully-outfitted models Leather-wrapped with full suite of LEDs, haptics, and control pods

Available add-on features include:

- Any of our full suite of **V4S control pod** options
- **Proprietary 2-way control module** pairing sends signals from the wheel to the vehicle AND receives/reacts to signals from the vehicles ADAS sensors
- **LED displays** are individually programmable and able to display any color
- **Haptic feedback**, built into the grip, can be programmed for alerts in sync with or independent of the LED lights



ADVANCED WHEEL DESIGNS



V4S SERIES

HEATED STEERING WHEEL



*Woodgrain/Leather Grip: Fully heated through the leather portion of the grip
Full Leather or Polyurethane Grip: Fully heated around the entire grip perimeter*

DIAMETER

18"

457mm

DEPTH
W/O HUB

4.65"

122mm

GRIP
OPTIONS

- Polyurethane Molded Foam
- Leather Wrap
- Simulated Woodgrain/Leather
- Simulated Carbon Fiber/Leather

EMBLEM
OPTIONS

- Integrated Horn Pad
- Emblem: VIP Logo, Custom Logo, Horn Trumpet, or Blank
- Emblem Sizes: Round 46mm or 35mm with Chrome Trim

APPLICATION
OPTIONS

- IMMI 4Front Driver Airbag-Ready
- Standard or Custom Control Pods
- Multiple Electrical Interface Options

PRIMARY
MARKETS

 **COMMERCIAL TRUCK**

 **FIRE & RESCUE**

 **MOTORCOACH & RV**

 **SCHOOL & TRANSIT BUS**

KEY FEATURES

- Fully integrated heat controller requires no additional wiring
- Proprietary design and manufacturing process
- Controls may be steering wheel-mounted or dash-mounted
- **Now available in molded polyurethane grip**
- Patent pending

KEY TECHNICAL SPECIFICATIONS

Grip Temperature: 35°C ±3° (95°F ±5°)

- Nominal voltage: 12V
- Max current: 4.5A
- Connector: 105307-1206 (Molex)



ADVANCED WHEEL DESIGNS

V4S SERIES

TRITOUCH STEERING WHEEL



DIAMETER

18"

457mm

DEPTH W/O HUB

4.65"

118mm

GRIP OPTIONS

- Polyurethane Molded Foam
- Leather Wrap
- Simulated Woodgrain/Leather
- Simulated Carbon Fiber/Leather

EMBLEM OPTIONS

- Integrated Horn Pad
- Emblem: VIP Logo, Custom Logo, Horn Trumpet, or Blank
- Emblem Sizes: Round 46mm or 35mm with Chrome Trim

APPLICATION OPTIONS

- IMMI 4Front Driver Airbag-Ready
- Standard or Custom Control Pods
- Multiple Electrical Interface Options

PRIMARY MARKETS

COMMERCIAL TRUCK

FIRE & RESCUE

MOTORCOACH & RV

SCHOOL & TRANSIT BUS

Shown above: simulated carbon fiber and full-grain leather grip
SmartWheel TriTouch controls: 19 driver-facing buttons + four 2-way side paddles
(27 total functions)

KEY FEATURES

TriTouch Control = Safety

Increases safety in large vehicles by bringing controls that are often at a reach point on a dashboard to the fingertips of your driver. Allows an OEM to add a level of functionality not available on any other commercial vehicle steering wheel

- Allows maximum function count of 27 (19 driver-facing buttons + four 2-way side paddles)
- Customer-specific graphics
- Options for LIN- or CAN-based communication protocols
- Compatible with IMMI VIP's heated steering wheel function
- Compatible with IMMI 4Front Driver Airbag Module





ADVANCED WHEEL DESIGNS

V4S SERIES



Shown above: simulated burl wood and full-grain leather grip
SmartWheel controls: 10 function buttons + 4 two-way paddles (18 total functions)

DIAMETER

18"
457mm

DEPTH W/O HUB

4.65"
118mm

GRIP OPTIONS

- Polyurethane Molded Foam
- Leather Wrap
- Simulated Woodgrain/Leather

EMBLEM OPTIONS

- Integrated Horn Pad
- Emblem: VIP Logo, Custom Logo, Horn Trumpet, or Blank
- Emblem Sizes: Round 46mm or 35mm with Chrome Trim

APPLICATION OPTIONS

- IMMI 4Front Driver Airbag-Ready
- Standard or Custom Control Pods
- Multiple Electrical Interface Options

PRIMARY MARKETS

- COMMERCIAL TRUCK
- FIRE & RESCUE
- MOTORCOACH & RV
- SCHOOL & TRANSIT BUS

DESIGN OPTIONS

Leather Finishes

Textured Black
Textured Brown
Custom Colors Available

Custom Patterns

Burl Wood (Standard)
Matte Blackwood
Charcoal Cherry
Gloss Black
Simulated Carbon Fiber





ADVANCED WHEEL DESIGNS

V4 SERIES



Shown above: premium full-grain leather grip

DIAMETER

18"
457mm

DEPTH W/O HUB

4.65"
118mm

GRIP OPTIONS

- Polyurethane Molded Foam
- Leather Wrap
- Simulated Woodgrain/Leather

EMBLEM OPTIONS

- Integrated Horn Pad
- Emblem: VIP Logo, Custom Logo, Horn Trumpet, or Blank
- Emblem Sizes: Round 46mm or 35mm with Chrome Trim

APPLICATION OPTIONS

- IMMI 4Front Driver Airbag-Ready
- Multiple Horn Connection Options

PRIMARY MARKETS

- COMMERCIAL TRUCK
- FIRE & RESCUE
- MOTORCOACH & RV
- SCHOOL & TRANSIT BUS

DESIGN OPTIONS

Leather Finishes

Textured Black
Textured Brown
Custom Colors Available

Custom Patterns

Burl Wood (Standard)
Matte Blackwood
Charcoal Cherry
Gloss Black
Simulated Carbon Fiber





STANDARD WHEEL DESIGNS

VALOR SERIES



Shown above: polyurethane molded foam grip with black spokes

DIAMETER	16" 406mm
DEPTH W/O HUB	1.82" 46mm
GRIP OPTIONS	<ul style="list-style-type: none">• Polyurethane Foam• Leather Wrap
EMBLEM OPTIONS	<ul style="list-style-type: none">• Center Cap or Horn Button• Emblem: VIP Logo, Custom Logo, Horn Trumpet, or Blank• Emblem Size: 35mm
APPLICATION OPTIONS	<ul style="list-style-type: none">• Military-Spec Quick Release Hub
PRIMARY MARKETS	<div><div></div> COMMERCIAL TRUCK</div> <div><div></div> CONSTRUCTION & AGRICULTURE</div> <div><div></div> OFF-HIGHWAY & SPECIALTY</div> <div><div></div> DEFENSE</div> <div><div></div> POWER SPORTS</div>

SPOKE DESIGN OPTIONS

Spoke Finishes Black Powdercoat Silver Powdercoat	Spoke Styles Solid Exposed Steel Slotted Exposed Steel Solid Exposed Aluminum
--	---





VANISH SERIES



Shown above: polyurethane molded foam grip with brushed nickel plate spokes

DIAMETER	18" 457mm	20" 508mm
DEPTH W/O HUB	2.56" 66mm	
GRIP OPTIONS	<ul style="list-style-type: none"> Flexible Vinyl Polyurethane Foam (18" only) Leather Wrap Woodgrain & Leather (18" only) Custom Graphics & Leather 	
EMBLEM OPTIONS	<ul style="list-style-type: none"> Center Cap or Horn Button Emblem: VIP Logo, Custom Logo, Horn Trumpet, or Blank Emblem Size: 35mm 	
PRIMARY MARKETS	<ul style="list-style-type: none"> COMMERCIAL TRUCK FIRE & RESCUE MOTORCOACH & RV SCHOOL & TRANSIT BUS CONSTRUCTION & AGRICULTURE OFF-HIGHWAY & SPECIALTY DEFENSE 	

SPOKE DESIGN OPTIONS	
Spoke Finishes Black Powdercoat Brushed Nickel Plated Chrome Plated	Spoke Styles Slotted Exposed Steel





STANDARD WHEEL DESIGNS

VENTURE SERIES



DIAMETER

18"
457mm

DEPTH
W/O HUB

1.70"
43mm

GRIP
OPTIONS

- Polyurethane Foam (18" only)
- Leather Wrap (18" only)
Optional red stitching available
- Genuine Polished Mahogany
- Painted Wood (18" only)

EMBLEM
OPTIONS

- Center Cap or Horn Button
- Emblem: VIP Logo, Custom Logo, Horn Trumpet, or Blank
- Emblem Size: 35mm

PRIMARY
MARKETS

- COMMERCIAL TRUCK
- FIRE & RESCUE
- MOTORCOACH & RV
- SCHOOL & TRANSIT BUS

*Shown above: full-grain leather grip with chrome slotted spokes
Detail shown: optional red stitching*

DESIGN OPTIONS

Genuine Wood Grip

Polished Mahogany
Custom Paint Options Available

Spoke Styles

Solid Embossed Steel (20" Only)
Slotted Exposed Steel

Spoke Finishes
Chrome Plated





VANGUARD SERIES



Shown above: vinyl molded grip, black spokes
Detail shown: optional red stitching

DIAMETER	14"	16"	17"
	356mm	406mm	432mm
DEPTH W/O HUB	1.90" 48mm		
GRIP OPTIONS	<ul style="list-style-type: none">Flexible VinylLeather WrapOptional red stitching available		
EMBLEM OPTIONS	<ul style="list-style-type: none">Center Cap or Horn ButtonEmblem: VIP Logo, Custom Logo, Horn Trumpet, or BlankEmblem Size: 35mm		
APPLICATION OPTIONS	<ul style="list-style-type: none">Frame-Mounted Spinner Knob (14" & 16" only)		
PRIMARY MARKETS	<div><div></div> CONSTRUCTION & AGRICULTURE</div> <div><div></div> OFF-HIGHWAY & SPECIALTY</div> <div><div></div> DEFENSE</div> <div><div></div> POWER SPORTS</div>		

SPOKE DESIGN OPTIONS

Spoke Finishes	Spoke Styles
Black Powdercoat	Slotted Exposed Steel





STANDARD WHEEL DESIGNS

VITAL SERIES



Shown above: fully molded vinyl grip, spokes, and top cap for extreme durability and maximum corrosion resistance

DIAMETER	14" 356mm	16" 406mm
DEPTH W/O HUB	3.19" 81mm	
GRIP OPTIONS	<ul style="list-style-type: none">Flexible VinylLeather Wrap	
EMBLEM OPTIONS	<ul style="list-style-type: none">Center Cap or Horn ButtonEmblem: VIP Logo, Custom Logo, Horn Trumpet, or BlankEmblem Size: 35mm	
APPLICATION OPTIONS	<ul style="list-style-type: none">Frame-Mounted Spinner Knob	
PRIMARY MARKETS	<ul style="list-style-type: none">CONSTRUCTION & AGRICULTUREOFF-HIGHWAY & SPECIALTYDEFENSEPOWER SPORTS	

SPOKE DESIGN OPTIONS

Spoke Finishes	Spoke Styles
Black Vinyl	Fully Overmolded





STANDARD WHEEL DESIGNS

VECTOR SERIES



Shown above: polyurethane molded foam grip with solid black spokes

DIAMETER	20" 508mm	22" 559mm
DEPTH W/O HUB	2.54" 65mm	
GRIP OPTIONS	<ul style="list-style-type: none">Flexible Vinyl (20" Only)Polyurethane Foam (22" only)Leather Wrap (20" only)	
EMBLEM OPTIONS	<ul style="list-style-type: none">Center Cap or Horn ButtonEmblem: VIP Logo, Custom Logo, Horn Trumpet, or BlankEmblem Size: 35mm	
PRIMARY MARKETS	<ul style="list-style-type: none">COMMERCIAL TRUCKFIRE & RESCUEMOTORCOACH & RVSCHOOL & TRANSIT BUSCONSTRUCTION & AGRICULTUREOFF-HIGHWAY & SPECIALTYDEFENSE	

SPOKE DESIGN OPTIONS

Spoke Finishes

Black Powdercoat
Chrome Plated

Spoke Styles

Solid Exposed Steel
3-Hole Exposed Steel
(20"; Chrome-Plated,
Leather only)





STANDARD WHEEL DESIGNS

VANTAGE SERIES



DIAMETER

20"
508mm

**DEPTH
W/O HUB**

5.26" (deep dish)
134mm

**GRIP
OPTIONS**

- Flexible Vinyl
- Leather Wrap

**EMBLEM
OPTIONS**

- Center Cap or Horn Button
- Emblem: VIP Logo, Custom Logo, Horn Trumpet, or Blank
- Emblem Size: 35mm

**PRIMARY
MARKETS**

- COMMERCIAL TRUCK
- FIRE & RESCUE
- MOTORCOACH & RV
- SCHOOL & TRANSIT BUS

Shown above: vinyl molded grip with black spokes

SPOKE DESIGN OPTIONS

Spoke Finishes

Black Powdercoat
Silver Powdercoat

Spoke Styles

Slotted Exposed Steel

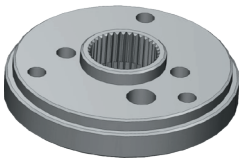


CONFIGURATION OPTIONS

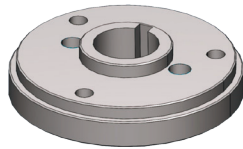
HUBS, SPACERS, BOOTS



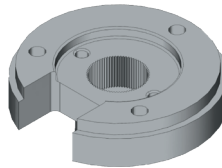
HUBS & HUB SPACERS



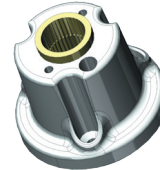
Standard Spline Configuration



Keyway Configuration



Clockspring Cutout Configuration



Cast Hub with Spline Insert



Hub Spacer

HUB CONFIGURATIONS

IMMI VIP P/N	SPLINE DIAMETER	SPLINE COUNT	HUB HEIGHT	MACHINED / CAST	TYPICAL APPLICATIONS
HK4	1"	36	1.2"	Machined	Heavy truck, RV
HK5	7/8"	36	1.2"	Machined	Construction Equip, Navistar
HK11	13/16"	40	1.4"	Machined	Ford Heavy Truck
HK12	11/16"	40	1.4"	Machined	UTV, Tractor, Ford
HK17	13/16"	40	1.7"	Machined	PACCAR
HK31	24mm	72	1.15"	Machined	Freightliner
HK30	1"	36	2.9"	Cast	Various
HK64A	3/4"	36	1.1"	Machined	GM
HK4VK	1"	Keyway	1.0"	Machined	Various
HKSGA	Hub Spacer 23.6mm – fits between hub and base wheel to lift wheel off column				

COLUMN SHROUDS (BOOTS)



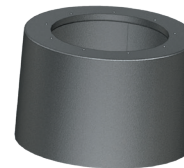
D4B



R4B



CW5B



CW6B



Shown: HK30 Cast Hub with CW6B Boot

COLUMN SHROUD CONFIGURATIONS

IMMI VIP P/N	SHROUD HEIGHT	DIAMETER	TYPICAL APPLICATIONS
D4B	.85"	3.8"	Various
L4B	1.4"	3.9"	Various
R4B	1.6"	3.6"	Fixed column PACCAR and Freightliner
CW5B	2.4"	2.4"	Construction Equipment
CW6B	2.8"	4.5"	Various
E4B2	3.8"	3.0"	For HK30 only. Freightliner Pre-2007

IMMI VIP WHEELS CAN BE CONFIGURED TO FIT ANY VEHICLE ON THE PLANET

Don't see the right configuration for your application?

Contact IMMI VIP at immiwheels@imminet.com for additional configuration options





STANDARD WHEEL DESIGNS PART NUMBER CONFIGURATIONS

VALOR SERIES BASE WHEEL CONFIGURATIONS

PART NUMBER	DIAM.	GRIP	SPOKES
BBBL1654SS	16"	PUR	Black Powdercoat (Solid)
BBBL1654	16"	Leather	Black Powdercoat (Solid)
SSBL1654SS	16"	PUR	Silver Powdercoat (Slotted)
BBABL1654SS	16"	PUR	Black Powdercoat Aluminum (Solid)
BSBL1654SS	16"	PUR	Black Powdercoat Quick-Release (Slotted)

VANISH SERIES BASE WHEEL CONFIGURATIONS

PART NUMBER	DIAM.	GRIP	SPOKES
BKBL1824SS	18"	PUR	Black Powdercoat
BKBL1824V	18"	Vinyl	Black Powdercoat
NKBL1824SS	18"	PUR	Brushed Nickel Plated
CKBL1824SS	18"	PUR	Chrome Plated
BTBL1824	18"	Leather	Black Powdercoat
NTBL1824	18"	Leather	Brushed Nickel Plated
CTBL1824	18"	Leather	Chrome Plated
CHBW1824	18"	Burl Wood/ Black Leather	Chrome Plated
NKBL2024V	20"	Vinyl	Brushed Nickel Plated
BKBL2024V	20"	Vinyl	Black Powdercoat
CKBL2024V	20"	Vinyl	Chrome Plated
NTBL2024	20"	Leather	Brushed Nickel Plated
BTBL2024	20"	Leather	Black Powdercoat
CTBL2024	20"	Leather	Chrome Plated

VENTURE SERIES BASE WHEEL CONFIGURATIONS

PART NUMBER	DIAM.	GRIP	SPOKES
CXBL184SS	18"	PUR	Chrome Plated (Slotted)
CXBL184	18"	Leather	Chrome Plated (Slotted)
CBWR184	18"	Polished Mahogany	Chrome Plated (Slotted)
CBWR184BLK	18"	Polished Black Wood	Chrome Plated (Slotted)
CBWR184WH	18"	Polished Ivory Wood	Chrome Plated (Slotted)
CBWR204	20"	Polished Mahogany	Chrome Plated (Solid)

VANGUARD SERIES BASE WHEEL CONFIGURATIONS

PART NUMBER	DIAM.	GRIP	SPOKES
BSBL143V	14"	Vinyl	Black Powdercoat (Slotted)
BSBL143LR	14"	Leather with Red Stitching	Black Powdercoat (Slotted)
BSBL163V	16"	Vinyl	Black Powdercoat (Slotted)
BSBL163L	16"	Leather	Black Powdercoat (Slotted)
BSBL173V	17"	Vinyl	Black Powdercoat (Slotted)

VITAL SERIES BASE WHEEL CONFIGURATIONS

PART NUMBER	DIAM.	GRIP	INTEGRATED HUB	BOOT
N14343PL	14"	Leather	HK4 - 1" x 36 spline	N/A
N1434D3P	14"	Vinyl	HK4 - 1" x 36 spline	N/A
N14343BP	14"	Vinyl	HK4 - 1" x 36 spline	1416B3 (1.46")
N1435D3P	14"	Vinyl	HK5 - 7/8" x 36 spline	N/A
N14353BAP	14"	Vinyl	HK5 - 7/8" x 36 spline	1416B3A (.835")
N14353BP	14"	Vinyl	HK5 - 7/8" x 36 spline	1416B3 (1.46")
N14364A3DP	14"	Vinyl	HK64A - 3/4" x 36 spline	N/A
N1634D3P	16"	Vinyl	HK4 - 1" x 36 spline	N/A
N16343BP	16"	Vinyl	HK4 - 1" x 36 spline	1416B3 (1.46")
N1635D3P	16"	Vinyl	HK5 - 7/8" x 36 spline	N/A
N16353BP	16"	Vinyl	HK5 - 7/8" x 36 spline	1416B3 (1.46")

VECTOR SERIES BASE WHEEL CONFIGURATIONS

PART NUMBER	DIAM.	GRIP	SPOKES
CBBL203V	20"	Vinyl	Chrome Plated
CBBL203	20"	Leather	Chrome Plated
BBBL203V	20"	Vinyl	Black Powdercoat
BBBL203	20"	Leather	Black Powdercoat
CHBL203	20"	Leather	Chrome Plated (w/ 3-hole spokes)
BBBL223SS	22"	PUR	Black Powdercoat

VANTAGE SERIES BASE WHEEL CONFIGURATIONS

PART NUMBER	DIAM.	GRIP	SPOKES
BDBL2024V	20"	Vinyl	Black Powdercoat
SDBL2024V	20"	Vinyl	Silver Powdercoat
BDBL2024	20"	Leather	Black Powdercoat
SDBL2024	20"	Leather	Silver Powdercoat

**IMMI VIP STEERS THE WORLD, PARTNERING WITH GLOBAL LEADERS
IN EVERY COMMERCIAL VEHICLE MARKET**

Tough: Global defense vehicles to arctic exploration trucks

Durable: School buses and city buses to high-volume delivery vans

Luxurious: Multi-million dollar motor homes to million-mile over-the-road trucks

*Adaptable: No matter what vehicle you move the world with, IMMI VIP has the
right steering wheel for your hands*



On-highway



Off-highway



*Customer
specific*



Aftermarket



Specialty



STEERING THE WORLD

imminet.com/wheels

ABOUT US



CATALOG



IMMI VIP

151 S. Ram Road

Antioch, IL 60002

847.395.7250

immiwheels@imminet.com

imminet.com/wheels



Steering The World | imminet.com/wheels | Copyright 2024 IMMI VIP. All Rights Reserved | 7277P Rev 04