



imminet.com



**BoatBuckle®**

HOOK, RATCHET & GO™

## The First is Still the Best!

Back in 1994, IMMI® revolutionized transom tie-downs forever when we introduced the original BoatBuckle®. From professional tournament anglers to casual weekend boaters, the praise we receive is always the same: "BoatBuckles are simply the finest tie-downs money can buy."

Installation is quick and easy and there are no tangled straps to fuss with or lose. Spend more time on the water and less time on the ramp. With BoatBuckle you simply Hook, Ratchet, & Go™!

- Available for transom, bow and gunwale applications
- A stainless steel system, perfect for brackish or saltwater environments, is available for transom and bow applications
- Designed for use with the BoatBuckle Universal Mounting Bracket Kit, a unique, three-sided bracket that enables the tie-down system to be mounted several different ways
- Web reach extends up to 43 inches
- Permanently or temporarily mounts to a trailer
- Standard G2: 5,000 pounds/pair
- Stainless Steel G2: 3,000 pounds/pair
- Dual release lever for easy right or left hand release
- Comfortable rubber grip handle and release lever
- Convenient, one-touch free spool mode
- Vinyl-coated steel hooks protect your boat's finish

*BoatBuckle 2" Retractable  
Stainless Steel Transom Tie-Down*



## BoatBuckle G2 Retractable Transom Tie-Downs

BoatBuckle G2 is the ultimate tie-down system in convenience, style, and innovation in trailer boat rigging! Available in standard and stainless steel for brackish or saltwater environments.

- Permanent one-bolt installation
- Self-retracting two-inch seat belt quality, polyester web
- Anti-corrosive construction
- Adapts to most mounting angles

### Specs

F08893 Standard  
Length up to 43"  
Break Strength: 2,500 lbs./ea  
SWL: 833 lbs./ea

F14256 Stainless Steel  
Length up to 43"  
Break Strength 1,500 lbs./ea  
SWL: 500 lbs./ea



## Mini G3 Retractable Transom Tie-Downs

The Mini G3 Transom tie-down can be permanently mounted with one bolt to most boat trailers. Six feet of one-inch webbing enables you to tie down more equipment in more applications, conveniently and securely.

- Permanent one-bolt installation
- Self-retracting web
- Anti-corrosive construction
- One-inch high quality, polyester web
- Dual safety lock security

### Specs

2 per interactive display (F106877)  
Single item (F106877BU)  
Length up to 72"  
Break Strength: 1,400 lbs./ea  
SWL: 466 lbs./ea



## Universal Mounting Bracket Kit

### Specs

F14254  
Break Strength: 5,000 lbs./ea  
SWL: 1,666 lbs./ea

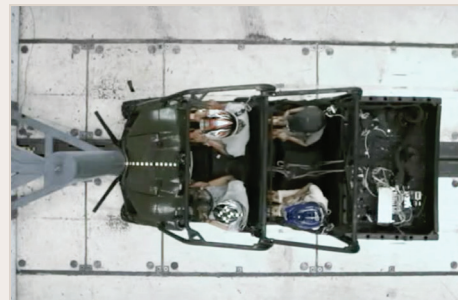


IMMI reminds you to always buckle up.

As the Industry Leader,  
We Drive Safety.

## What sets us apart:

Until CAPE®, the Center for Advanced Product Evaluation, stepped in, very little crash testing had been done for the UTV market. They set out to change that and they succeeded. CAPE has crashed, smashed, and rolled a number of UTVs to test everything from vehicle integrity to harness and seat belt safety. Whether you use a UTV to play hard or work hard, CAPE is working to make them safer.



**IMMI**  
imminet.com

Larry Gray III  
lagray@imminet.com

18881 IMMI Way  
Westfield, IN 46074  
317.896.9531

