



STEERING THE WORLD

PRODUCT CATALOG

IMMI VIP

151 S. Ram Road
Antioch, IL 60002
847.395.7250

imminet.com/wheels
immiwheels@imminet.com



Steering The World | imminet.com/wheels | Copyright 2020 IMMI VIP. All Rights Reserved | 7277P Rev 01



STEERING THE WORLD

imminet.com/wheels

- Since 1969, IMMI VIP has designed, manufactured, and marketed steering wheels, controls, and interior products for every commercial vehicle market on the road today
- Proudly Made in USA, serving customers around the world
- Industry leader in design, quality, and manufacturing capability
- Registered to IATF 16949; 2016 Quality Standards
- Standard wheel & hub configuration kits available to fit almost any vehicle on the planet
- Custom-engineered solutions available to fit any application

Visit imminet.com/wheels or email immiwheels@imminet.com for more information

Vehicle Improvement Products is now IMMI VIP

VIP + IMMI = OVER 100 YEARS OF INNOVATION, SAFETY, AND QUALITY

Established in 1961, IMMI is the global leader in commercial vehicle safety systems. A world-class manufacturer of seat belts, air bags, and complete seating systems for commercial vehicles, IMMI also offers a full range of static and dynamic testing capabilities at the Center for Advanced Product Evaluation (CAPE) in Westfield, IN.

Visit IMMI at imminet.com and CAPE at capetesting.com

VIP + IMMI = BRINGING SAFETY TO PEOPLE MORE THAN EVER BEFORE!



WHAT STEERS YOUR WORLD?

MARKETS SERVED



COMMERCIAL
TRUCK



FIRE
& RESCUE



MOTORCOACH
& RV



SCHOOL BUS &
TRANSIT BUS



CONSTRUCTION
& AGRICULTURE



OFF-HIGHWAY
& SPECIALTY



DEFENSE



POWER SPORTS



UNCOMPROMISING QUALITY

STEERING WHEEL CONSTRUCTION



STANDARD WHEEL DESIGNS

Horn Button Or Center Cap

Available with or without horn functionality

Top Cap

Emblem (35mm)

Custom logos available

Base Steering Wheel

Formed/welded armature
Molded or wood grip

Optional Hub Spacer

Lifts wheel additional 1" off steering column

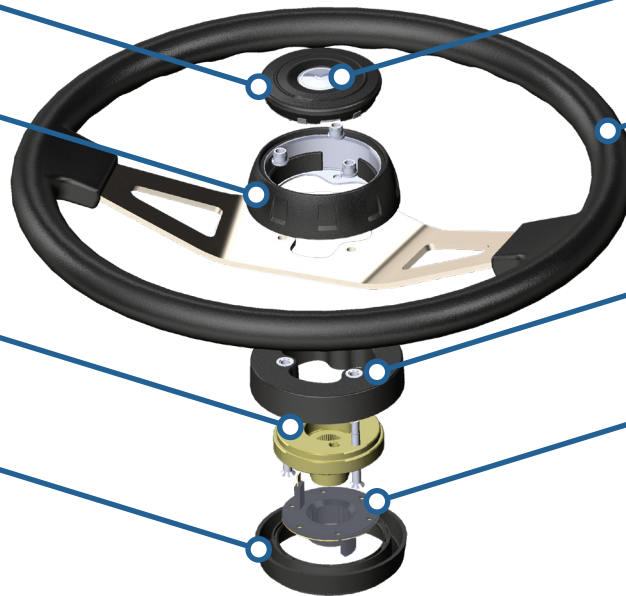
Horn Contact Plate

Hub & Hub Attachments

Hubs available to fit any vehicle on the planet

Optional Column Shroud

Standard & custom designs available to cover steering column gap



ADVANCED WHEEL DESIGNS

Horn Pad

Available with Integrated IMMI 4Front Airbag

Emblem (35mm or 46mm)

Custom logos available

Base Steering Wheel

Formed/welded armature
Molded grip

Optional Control Pods

Numerous standard and custom configurations available

Airbag Mounting System

Integrated Hub

Hubs available to fit any vehicle on the planet



GET A GRIP

STANDARD WHEEL OPTIONS



STANDARD MOLDED

FLEXIBLE VINYL (MOLDED PVC)

Feel Extra Firm Cushion	Durability Extreme
Texture Molded-In Texture	Other High Density High UV Resistance



POLYURETHANE MOLDED FOAM

Feel Standard Firm Cushion	Durability Very High
Texture Molded-In Texture	Other Moderate Density, Self-Skinning Foam



PREMIUM LEATHER

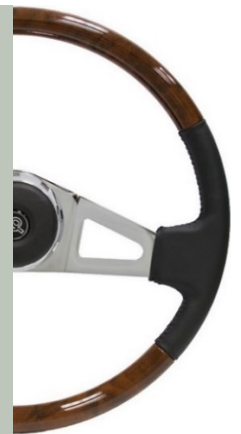
FULL LEATHER WRAP

Feel Premium Firm Cushion	Durability High
Texture Luxury Soft Full Grain Leather	Options Multiple Leather Colors & Custom Stitching Available



WOODGRAIN & LEATHER WRAP

Feel Ultra Premium	Durability High
Texture Luxury Soft Leather & Simulated Woodgrain Finish	Options Multiple Woodgrains & Leather Colors Available



WOOD & CUSTOM

GENUINE POLISHED WOOD

Feel Premium Hardwood	Durability High
Texture Smooth Wood with Finger Grips	Options High Gloss Mahogany High Gloss Black Or Ivory Finish



CUSTOM GRAPHICS & LEATHER WRAP

Feel Premium & Custom	Durability High
Texture Luxury Soft Leather & Custom Graphic Finish	Options Multiple Leather Colors & Unlimited Graphics Available



CONTROL AT EVERY TURN

ADVANCED WHEEL OPTIONS



ADVANCED WHEEL GRIP OPTIONS

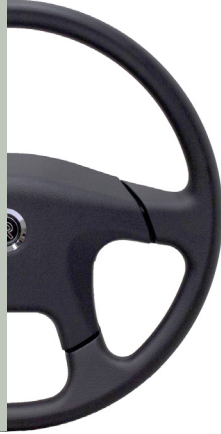
POLYURETHANE MOLDED FOAM

Feel
Standard Firm
Cushion

Durability
Very High

Texture
Molded-In
Texture

Other
Moderate
Density,
Self-Skinning
Foam



FULL LEATHER WRAP

Feel
Premium
Firm Cushion

Durability
High

Texture
Luxury Soft
Full Grain
Leather

Options
Multiple
Leather Colors
& Custom
Stitching
Available



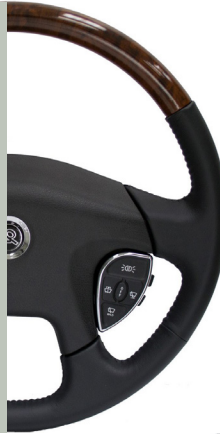
WOODGRAIN & LEATHER WRAP

Feel
Ultra
Premium

Durability
High

Texture
Luxury Soft
Leather &
Simulated
Woodgrain Finish

Options
Multiple
Woodgrains &
Leather Colors
Available



ADVANCED CONTROLS

SWITCH CONTROL OPTIONS

Functions
Up to 10 Button Functions,
Including Cruise Control, Phone
Controls, Lighting, Wipers,
Engine Brake, and More

Custom Configurations
Available

Construction
Silicone Rubber with
Laser-Etched Graphics

Paddles
Available With 1 to 4 Two-Way
Paddle Switches, For Up To 8
Additional Functions



AIRBAG INTEGRATION

**V4 and V4S Wheels are
available for integration
with IMMI frontal airbags**

Crash testing and deployment
validation program required

VEHICLE INTERFACE OPTIONS

CAN (J1939)
SM300 Series Controllers

RELAY OUTPUT
SM200 Series Controllers

LIN
Direct from wheel

ANALOG
Direct from wheel
(Non-Paddle Controls)





ADVANCED WHEEL DESIGNS

V4 SERIES



Shown above: premium full-grain leather grip

DIAMETER

18"

457mm

DEPTH W/O HUB

4.80"

122mm

(standard)

6.26"

159mm

(airbag)

GRIP OPTIONS

- Polyurethane Molded Foam
- Leather Wrap
- Simulated Woodgrain/Leather

EMBLEM OPTIONS

- Integrated Horn Pad
- Emblem: VIP Logo, Custom Logo, Horn Trumpet, or Blank
- Emblem Size: 35mm or 46mm

APPLICATION OPTIONS

- IMMI Frontal Airbag-Ready
- Multiple Vehicle Interface Options

PRIMARY MARKETS

- COMMERCIAL TRUCK
- FIRE & RESCUE
- MOTORCOACH & RV
- SCHOOL & TRANSIT BUS

DESIGN OPTIONS

Leather Finishes

Textured Black
Textured Brown

Custom Colors Available

Woodgrain Colors

Burl Wood (Standard)
Matte Blackwood
Charcoal Cherry
Gloss Black





ADVANCED WHEEL DESIGNS

V4S SERIES



Shown above: simulated burl wood and full-grain leather grip
SmartWheel controls: 10 function buttons + 4 two-way paddles (18 total functions)

DIAMETER

18"

457mm

DEPTH W/O HUB

4.80"

122mm

(standard)

6.26"

159mm

(airbag)

GRIP OPTIONS

- Polyurethane Molded Foam
- Leather Wrap
- Simulated Woodgrain/Leather

EMBLEM OPTIONS

- Integrated Horn Pad
- Emblem: VIP Logo, Custom Logo, Horn Trumpet, or Blank
- Emblem Sizes: 35mm or 46mm

APPLICATION OPTIONS

- IMMI Frontal Airbag-Ready
- Standard or Custom Control Pods
- Multiple Vehicle Interface Options

PRIMARY MARKETS

COMMERCIAL TRUCK

FIRE & RESCUE

MOTORCOACH & RV

SCHOOL & TRANSIT BUS

DESIGN OPTIONS

Leather Finishes

Textured Black
Textured Brown

Custom Colors Available

Woodgrain Colors

Burl Wood (Standard)
Matte Blackwood
Charcoal Cherry
Gloss Black





STANDARD WHEEL DESIGNS

VENTURE SERIES



DIAMETER	18" 457mm	20" 508mm
DEPTH W/O HUB	1.70" 43mm	
GRIP OPTIONS	<ul style="list-style-type: none"> • Polyurethane Foam (18" only) • Leather Wrap (18" only) Optional red stitching available • Genuine Polished Mahogany • Painted Wood (18" only) 	
EMBLEM OPTIONS	<ul style="list-style-type: none"> • Center Cap or Horn Button • Emblem: VIP Logo, Custom Logo, Horn Trumpet, or Blank • Emblem Size: 35mm 	
PRIMARY MARKETS	<ul style="list-style-type: none"> COMMERCIAL TRUCK FIRE & RESCUE MOTORCOACH & RV SCHOOL & TRANSIT BUS 	

Shown above: full-grain leather grip with chrome slotted spokes
Detail shown: optional red stitching

DESIGN OPTIONS

Genuine Wood Grip

Polished Mahogany
Piano Black Gloss
Ivory Gloss

Custom Paint Options Available

Spoke Styles

Solid Embossed Steel (20" Only)
Slotted Exposed Steel

Spoke Finishes
Chrome Plated





STANDARD WHEEL DESIGNS

VANTAGE SERIES



DIAMETER

20"
508mm

**DEPTH
W/O HUB**

5.26" (deep dish)
134mm

**GRIP
OPTIONS**

- Flexible Vinyl
- Leather Wrap

**EMBLEM
OPTIONS**

- Center Cap or Horn Button
- Emblem: VIP Logo, Custom Logo, Horn Trumpet, or Blank
- Emblem Size: 35mm

**PRIMARY
MARKETS**

- COMMERCIAL TRUCK
- FIRE & RESCUE
- MOTORCOACH & RV
- SCHOOL & TRANSIT BUS

Shown above: vinyl molded grip with black spokes

SPOKE DESIGN OPTIONS

Spoke Finishes

Black Powdercoat
Silver Powdercoat

Spoke Styles

Slotted Exposed Steel





VANISH SERIES



Shown above: polyurethane molded foam grip with brushed nickel plate spokes

DIAMETER	18" 457mm	20" 508mm
DEPTH W/O HUB	2.56" 66mm	
GRIP OPTIONS	<ul style="list-style-type: none"> Flexible Vinyl Polyurethane Foam (18" only) Leather Wrap Woodgrain & Leather (18" only) Custom Graphics & Leather 	
EMBLEM OPTIONS	<ul style="list-style-type: none"> Center Cap or Horn Button Emblem: VIP Logo, Custom Logo, Horn Trumpet, or Blank Emblem Size: 35mm 	
PRIMARY MARKETS	<ul style="list-style-type: none"> COMMERCIAL TRUCK FIRE & RESCUE MOTORCOACH & RV SCHOOL & TRANSIT BUS CONSTRUCTION & AGRICULTURE OFF-HIGHWAY & SPECIALTY DEFENSE 	

SPOKE DESIGN OPTIONS	
Spoke Finishes Black Powdercoat Brushed Nickel Plated Chrome Plated	Spoke Styles Slotted Exposed Steel





STANDARD WHEEL DESIGNS

VECTOR SERIES



Shown above: polyurethane molded foam grip with solid black spokes

DIAMETER

20"

508mm

22"

559mm

DEPTH W/O HUB

2.54"

65mm

GRIP OPTIONS

- Flexible Vinyl (20" Only)
- Polyurethane Foam (22" only)
- Leather Wrap (20" only)

EMBLEM OPTIONS

- Center Cap or Horn Button
- Emblem: VIP Logo, Custom Logo, Horn Trumpet, or Blank
- Emblem Size: 35mm

PRIMARY MARKETS

- COMMERCIAL TRUCK
- FIRE & RESCUE
- MOTORCOACH & RV
- SCHOOL & TRANSIT BUS
- CONSTRUCTION & AGRICULTURE
- OFF-HIGHWAY & SPECIALTY
- DEFENSE

SPOKE DESIGN OPTIONS

Spoke Finishes

Black Powdercoat
Chrome Plated

Spoke Styles

Solid Exposed Steel
3-Hole Exposed Steel
(20"; Chrome-Plated,
Leather only)





STANDARD WHEEL DESIGNS

VALOR SERIES



Shown above: polyurethane molded foam grip with black spokes

DIAMETER

16"
406mm

DEPTH
W/O HUB

1.82"
46mm

GRIP
OPTIONS

- Polyurethane Foam
- Leather Wrap

EMBLEM
OPTIONS

- Center Cap or Horn Button
- Emblem: VIP Logo, Custom Logo, Horn Trumpet, or Blank
- Emblem Size: 35mm

APPLICATION
OPTIONS

- Military-Spec Quick Release Hub

PRIMARY
MARKETS

- COMMERCIAL TRUCK
- CONSTRUCTION & AGRICULTURE
- OFF-HIGHWAY & SPECIALTY
- DEFENSE
- POWER SPORTS

SPOKE DESIGN OPTIONS

Spoke Finishes

Black Powdercoat
Silver Powdercoat

Spoke Styles

Solid Exposed Steel
Slotted Exposed Steel
Solid Exposed Aluminum





VANGUARD SERIES



Shown above: vinyl molded grip, black spokes
Detail shown: optional red stitching

DIAMETER	14"	16"	17"
	356mm	406mm	432mm
DEPTH W/O HUB	1.90"		
	48mm		
GRIP OPTIONS	<ul style="list-style-type: none"> Flexible Vinyl Leather Wrap Optional red stitching available 		
EMBLEM OPTIONS	<ul style="list-style-type: none"> Center Cap or Horn Button Emblem: VIP Logo, Custom Logo, Horn Trumpet, or Blank Emblem Size: 35mm 		
APPLICATION OPTIONS	<ul style="list-style-type: none"> Frame-Mounted Spinner Knob (14" & 16" only) 		
PRIMARY MARKETS	<div> <div></div> CONSTRUCTION & AGRICULTURE </div> <div> <div></div> OFF-HIGHWAY & SPECIALTY </div> <div> <div></div> DEFENSE </div> <div> <div></div> POWER SPORTS </div>		

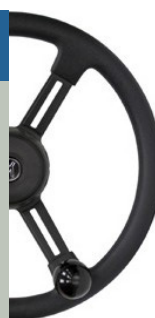
SPOKE DESIGN OPTIONS

Spoke Finishes

Black Powdercoat

Spoke Styles

Slotted Exposed Steel





STANDARD WHEEL DESIGNS

VITAL SERIES



Shown above: fully molded vinyl grip, spokes, and top cap for extreme durability and maximum corrosion resistance

DIAMETER	14" 356mm	16" 406mm
DEPTH W/O HUB	3.19" 81mm	
GRIP OPTIONS	<ul style="list-style-type: none"> Flexible Vinyl Leather Wrap 	
EMBLEM OPTIONS	<ul style="list-style-type: none"> Center Cap or Horn Button Emblem: VIP Logo, Custom Logo, Horn Trumpet, or Blank Emblem Size: 35mm 	
APPLICATION OPTIONS	<ul style="list-style-type: none"> Frame-Mounted Spinner Knob 	
PRIMARY MARKETS	<div> <div></div> CONSTRUCTION & AGRICULTURE <div></div> OFF-HIGHWAY & SPECIALTY <div></div> DEFENSE <div></div> POWER SPORTS </div>	

SPOKE DESIGN OPTIONS

Spoke Finishes

Black Vinyl

Spoke Styles

Fully Overmolded

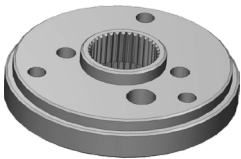


CONFIGURATION OPTIONS

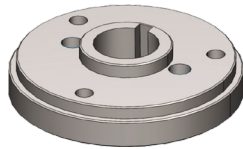
HUBS, SPACERS, BOOTS



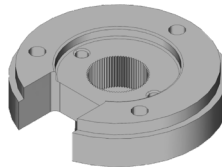
HUBS & HUB SPACERS



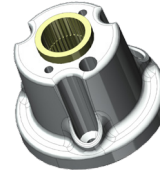
Standard Spline Configuration



Keyway Configuration



Clockspring Cutout Configuration



Cast Hub with Spline Insert



Hub Spacer

HUB CONFIGURATIONS

IMMI VIP P/N	SPLINE DIAMETER	SPLINE COUNT	HUB HEIGHT	MACHINED / CAST	TYPICAL APPLICATIONS
HK4	1"	36	1.2"	Machined	Heavy truck, RV
HK5	7/8"	36	1.2"	Machined	Construction Equip, Navistar
HK11	13/16"	40	1.4"	Machined	Ford Heavy Truck
HK12	11/16"	40	1.4"	Machined	UTV, Tractor, Ford
HK17	13/16"	40	1.7"	Machined	PACCAR
HK31	24mm	72	1.15"	Machined	Freightliner
HK30	1"	36	2.9"	Cast	Various
HK64A	3/4"	36	1.1"	Machined	GM
HK4VK	1"	Keyway	1.0"	Machined	Various
HKSGA	Hub Spacer 23.6mm – fits between hub and base wheel to lift wheel off column				

COLUMN SHROUDS (BOOTS)



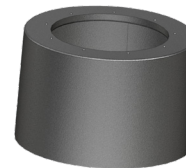
D4B



R4B



CW5B



CW6B



Shown: HK30 Cast Hub with CW6B Boot

COLUMN SHROUD CONFIGURATIONS

IMMI VIP P/N	SHROUD HEIGHT	DIAMETER	TYPICAL APPLICATIONS
D4B	.85"	3.8"	Various
L4B	1.4"	3.9"	Various
R4B	1.6"	3.6"	Fixed column PACCAR and Freightliner
CW5B	2.4"	2.4"	Construction Equipment
CW6B	2.8"	4.5"	Various
E4B2	3.8"	3.0"	For HK30 only. Freightliner Pre-2007

IMMI VIP WHEELS CAN BE CONFIGURED TO FIT ANY VEHICLE ON THE PLANET

Don't see the right configuration for your application?

Contact IMMI VIP at immiwheels@imminet.com for additional configuration options





STANDARD WHEEL DESIGNS PART NUMBER CONFIGURATIONS

VECTOR SERIES BASE WHEEL CONFIGURATIONS

PART NUMBER	DIAM.	GRIP	SPOKES
CBBL203V	20"	Vinyl	Chrome Plated
CBBL203	20"	Leather	Chrome Plated
BBBL203V	20"	Vinyl	Black Powdercoat
BBBL203	20"	Leather	Black Powdercoat
CHBL203	20"	Leather	Chrome Plated (w/ 3-hole spokes)
BBBL223SS	22"	PUR	Black Powdercoat

VENTURE SERIES BASE WHEEL CONFIGURATIONS

PART NUMBER	DIAM.	GRIP	SPOKES
CXBL184SS	18"	PUR	Chrome Plated (Slotted)
CXBL184	18"	Leather	Chrome Plated (Slotted)
CBWR184	18"	Polished Mahogany	Chrome Plated (Slotted)
CBWR184BLK	18"	Polished Black Wood	Chrome Plated (Slotted)
CBWR184WH	18"	Polished Ivory Wood	Chrome Plated (Slotted)
CBWR204	20"	Polished Mahogany	Chrome Plated (Solid)

VANTAGE SERIES BASE WHEEL CONFIGURATIONS

PART NUMBER	DIAM.	GRIP	SPOKES
BDBL2024V	20"	Vinyl	Black Powdercoat
SDBL2024V	20"	Vinyl	Silver Powdercoat
BDBL2024	20"	Leather	Black Powdercoat
SDBL2024	20"	Leather	Silver Powdercoat

VALOR SERIES BASE WHEEL CONFIGURATIONS

PART NUMBER	DIAM.	GRIP	SPOKES
BBBL1654SS	16"	PUR	Black Powdercoat (Solid)
BBBL1654	16"	Leather	Black Powdercoat (Solid)
SSBL1654SS	16"	PUR	Silver Powdercoat (Slotted)
BBABL1654SS	16"	PUR	Black Powdercoat Aluminum (Solid)
BSBL1654SS	16"	PUR	Black Powdercoat Quick-Release (Slotted)

VANISH SERIES BASE WHEEL CONFIGURATIONS

PART NUMBER	DIAM.	GRIP	SPOKES
BKBL1824SS	18"	PUR	Black Powdercoat
BKBL1824V	18"	Vinyl	Black Powdercoat
NKBL1824SS	18"	PUR	Brushed Nickel Plated
CKBL1824SS	18"	PUR	Chrome Plated
BTBL1824	18"	Leather	Black Powdercoat
NTBL1824	18"	Leather	Brushed Nickel Plated
CTBL1824	18"	Leather	Chrome Plated
CHBW1824	18"	Burl Wood/ Black Leather	Chrome Plated
NKBL2024V	20"	Vinyl	Brushed Nickel Plated
BKBL2024V	20"	Vinyl	Black Powdercoat
CKBL2024V	20"	Vinyl	Chrome Plated
NTBL2024	20"	Leather	Brushed Nickel Plated
BTBL2024	20"	Leather	Black Powdercoat
CTBL2024	20"	Leather	Chrome Plated

VANGUARD SERIES BASE WHEEL CONFIGURATIONS

PART NUMBER	DIAM.	GRIP	SPOKES
BSBL143V	14"	Vinyl	Black Powdercoat (Slotted)
BSBL143LR	14"	Leather with Red Stitching	Black Powdercoat (Slotted)
BSBL163V	16"	Vinyl	Black Powdercoat (Slotted)
BSBL163L	16"	Leather	Black Powdercoat (Slotted)
BSBL173V	17"	Vinyl	Black Powdercoat (Slotted)

VITAL SERIES BASE WHEEL CONFIGURATIONS

PART NUMBER	DIAM.	GRIP	INTEGRATED HUB	BOOT
N14343PL	14"	Leather	HK4 - 1" x 36 spline	N/A
N1434D3P	14"	Vinyl	HK4 - 1" x 36 spline	N/A
N14343BP	14"	Vinyl	HK4 - 1" x 36 spline	1416B3 (1.46")
N1435D3P	14"	Vinyl	HK5 - 7/8" x 36 spline	N/A
N14353BAP	14"	Vinyl	HK5 - 7/8" x 36 spline	1416B3A (.835")
N14353BP	14"	Vinyl	HK5 - 7/8" x 36 spline	1416B3 (1.46")
N14364A3DP	14"	Vinyl	HK64A - 3/4" x 36 spline	N/A
N1634D3P	16"	Vinyl	HK4 - 1" x 36 spline	N/A
N16343BP	16"	Vinyl	HK4 - 1" x 36 spline	1416B3 (1.46")
N1635D3P	16"	Vinyl	HK5 - 7/8" x 36 spline	N/A
N16353BP	16"	Vinyl	HK5 - 7/8" x 36 spline	1416B3 (1.46")

**IMMI VIP STEERS THE WORLD, PARTNERING WITH GLOBAL LEADERS
IN EVERY COMMERCIAL VEHICLE MARKET**

Tough: Global defense vehicles to arctic exploration trucks

Durable: School buses and city buses to high-volume delivery vans

Luxurious: Multi-million dollar motor homes to million-mile over-the-road trucks

*Adaptable: No matter what vehicle you move the world with, IMMI VIP has the
right steering wheel for your hands*



On-highway



Off-highway



*Customer
specific*



Aftermarket



Specialty



STEERING THE WORLD

imminet.com/wheels

IMMI VIP

151 S. Ram Road

Antioch, IL 60002

847.395.7250

immiwheels@imminet.com

imminet.com/wheels

