



imminet.com



CargoBuckle®



HOOK, RATCHET & GO®

Hook, Ratchet & GO™!

Whether you are hauling gear for work, or you are heading out on a new adventure, CargoBuckle® is ready in an instant when you need it, and neatly tucked away when you don't. No more fighting with a tangled mess of straps. With CargoBuckle by IMMI®, when it's time to leave you simply Hook, Ratchet & GO!

- Tie down everything from motorcycles to lawnmowers
- Weather resistant
- Longer, stronger, and more durable than any other ratchet tie-down
- Can be permanently or temporarily mounted on your truck or trailer
- Flush mount and ladder rack systems available

*CargoBuckle Mini
1" Retractable
Ratchet Tie-Down*



*CargoBuckle
2" Retractable
Ratchet Tie-Down*



Retractable Ratchet Tie-Downs

Take the hassle out of securing your gear. The CargoBuckle has longer, heavier web that enables you to tie down more equipment in more applications, conveniently and securely. CargoBuckle can be permanently mounted with one bolt on a trailer, toy hauler, cargo rack, lift, truck, ladder rack, and in various other applications.

- Permanent one-bolt installation
- Six-foot reach, self-retracting web
- Anti-corrosive construction
- Dual safety lock security
- Two-inch seat belt quality, polyester web
- Interactive display package
- Optional adapters available to enable mobility

Specs

Packaged Pair (F18800) Single Item (F101867)

Length up to 72"

Break Strength: 3,500 lbs./ea

SWL: 1,167 lbs./ea

Mini Retractable Ratchet Tie-Down

Long-time customers who enjoy the advantages of their 2" CargoBuckle asked for a smaller version with all the strength and durability they've come to expect, and IMMI delivered.

Specs

Packaged Pair (F103745) Single item (F103745BU)

Length up to 72"

Break Strength: 1,400 lbs./ea

SWL: 466 lbs./ea

CargoBuckle Mini with Dual S-Hooks

For added versatility and convenience, the CargoBuckle Mini with Dual S-Hooks offers an attached vinyl-coated S-hook with keeper to provide an easy hook-up for any non-permanent mounting at a great price!

- Six-foot reach, self-retracting web
- Anti-corrosive construction
- Dual safety lock security
- One-inch seat belt quality, polyester web
- Interactive display case
- Optional adapters available to enable mobility



Specs

Packaged Pair (F111640) Single Item (F111640BU)

Length up to 72"

Break Strength: 1,400 lbs/ea

SWL: 466 lbs./ea

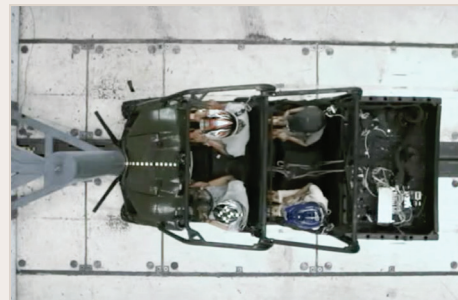


IMMI reminds you to always buckle up.

As the Industry Leader,
We Drive Safety.

What sets us apart:

Until CAPE®, the Center for Advanced Product Evaluation, stepped in, very little crash testing had been done for the UTV market. They set out to change that and they succeeded. CAPE has crashed, smashed, and rolled a number of UTVs to test everything from vehicle integrity to harness and seat belt safety. Whether you use a UTV to play hard or work hard, CAPE is working to make them safer.



IMMI
imminet.com

Larry Gray III
lagray@imminet.com

18881 IMMI Way
Westfield, IN 46074
317.896.9531

